

This Spring, watch out for these

# cat hazards

## Out and about



### Pesticides and herbicides

While off-the-shelf products are generally safe for pets, they can present dangers if brushed against or swallowed.



### Cocoa mulch

Like chocolate, cocoa-based garden soil dressing contains theobromine which poses a potentially lethal risk.



### Grass blades

Cats who have a penchant for eating grass run the risk of getting the blades stuck in their nose and throat. This can cause breathing problems, sneezing and nasal discharge.



### Adders

Adders are most likely to bite in spring when they've just come out of hibernation. Their venom is highly dangerous to cats.



### Wasps and bees

Most wasp and bee stings are not emergencies, but veterinary help may be needed if your cat is stung in the mouth or neck, or is allergic.

## Flowers and plants



### Daffodils

The bulbs are particularly poisonous and, if eaten, can trigger severe vomiting and diarrhoea and possibly even death.



### Rhododendrons and azaleas

These contain a highly toxic substance called grayanotoxin which can cause nausea, vomiting, difficulty breathing and coma.



### Lilies

All parts of a lily are toxic to cats and can cause convulsions and are potentially fatal when eaten.



### Buttercups

A common sight in gardens during springtime, buttercups are mildly poisonous and can cause drooling, vomiting and even seizures.



### Tulips, amaryllis and hyacinth

While not as toxic as daffodils, the bulbs of these flowers are dangerous if eaten in large quantities.

## Food and drinks



### Chocolate

Especially common around Easter, chocolate contains a stimulant called theobromine, a bit like caffeine, that's poisonous to cats.



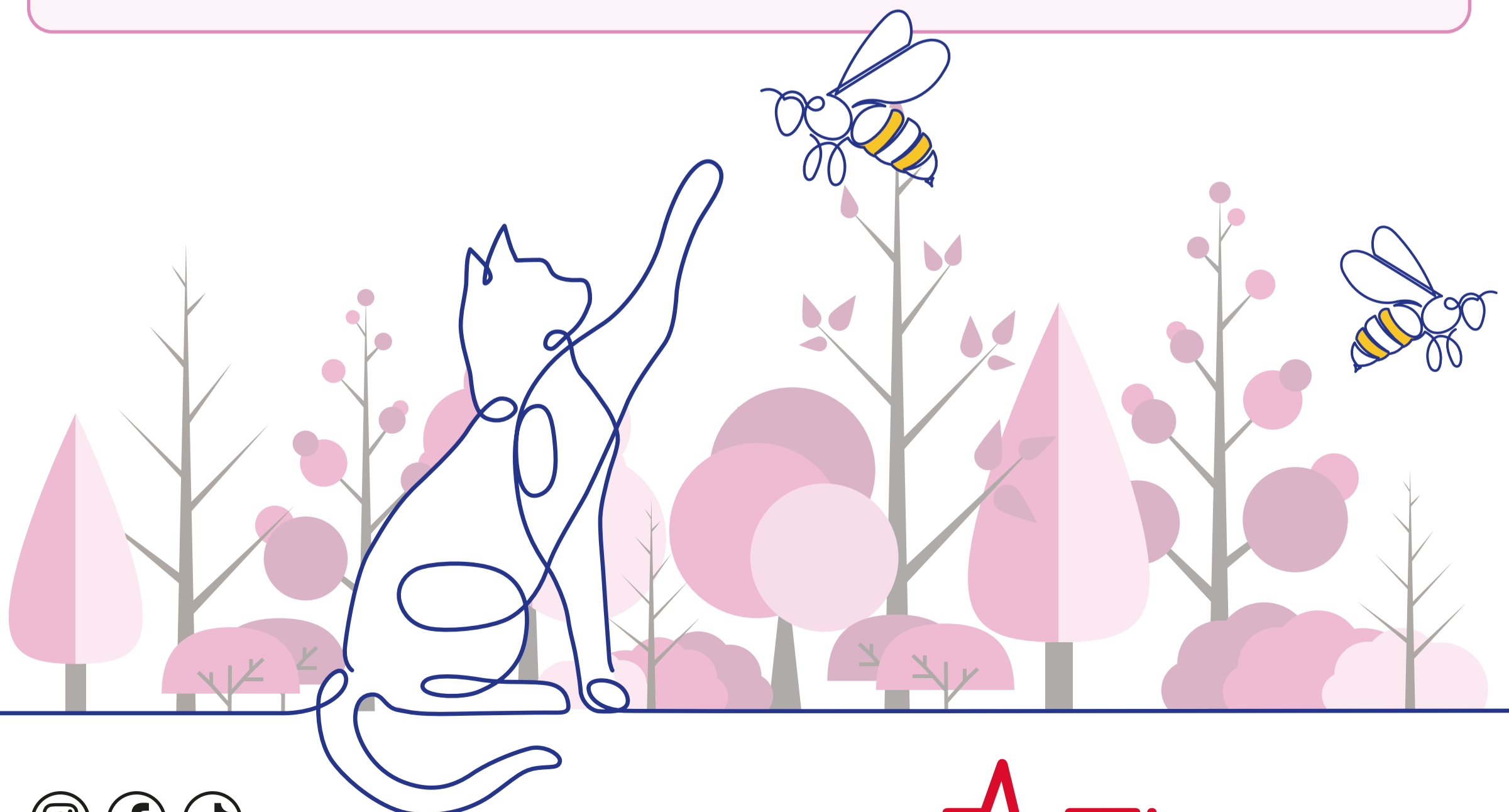
### Hot cross buns

Grapes, raisins, currants and sultanas, as well as foods that contain them, can be toxic to cats.



### Spring onions

Can cause stomach irritation and lead to red blood cell damage and anaemia.



[vets-now.com/spring](https://vets-now.com/spring)

 **vetsnow**