



Hot Dogs

UNDERSTANDING HEATSTROKE IN DOGS

In 2022, Vets Now treated **384 confirmed cases of heat-related illnesses** in dogs.

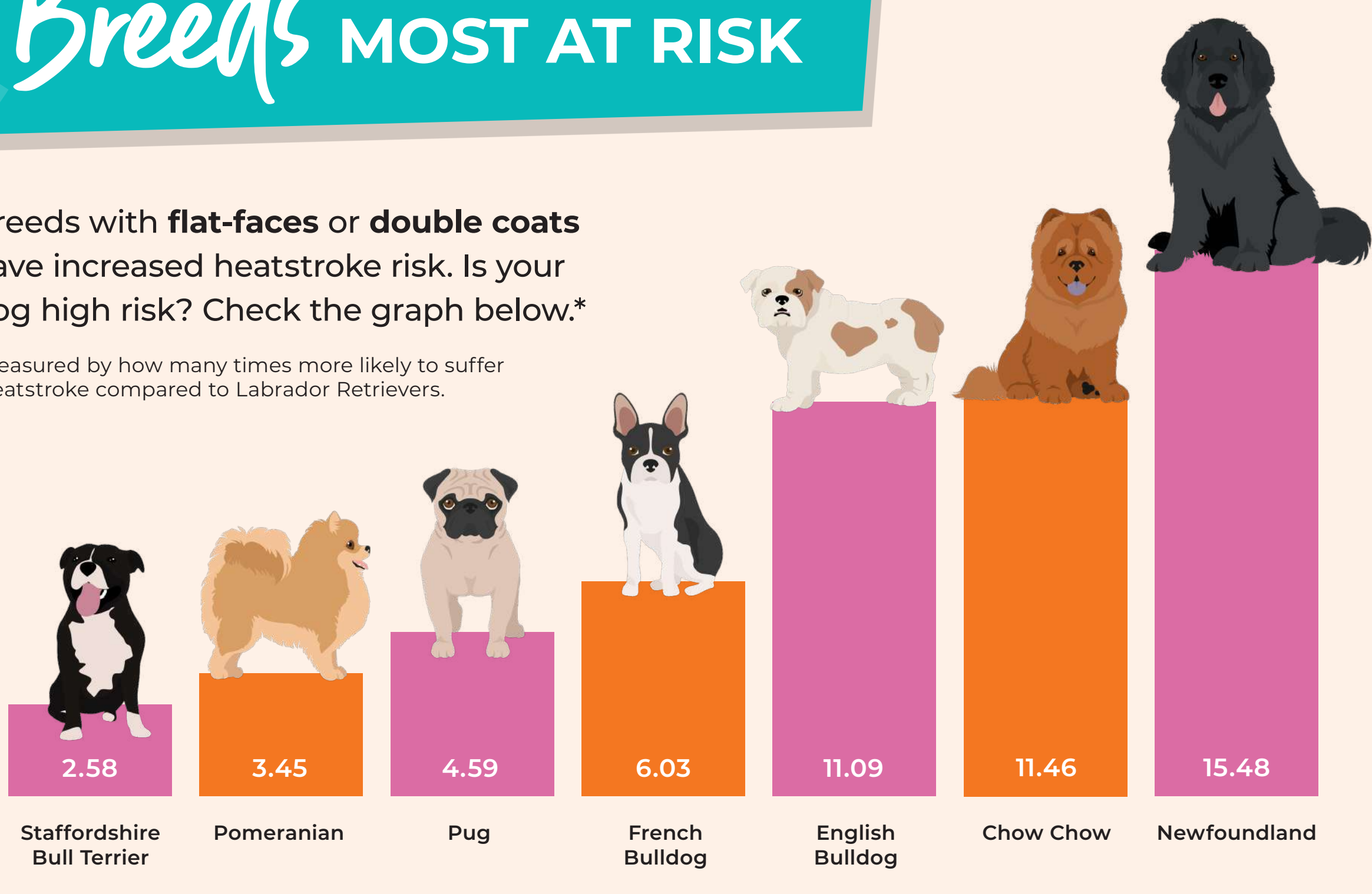
What is Heatstroke?

- When a dog's body temperature gets **too hot for too long**, it can no longer cool back down naturally to a safe body temperature and the ongoing heat within the body causes **organ damage**.
- It is the **most severe stage of heat-related illness (HRI)**.
- Considered a **medical emergency**.

Breeds MOST AT RISK

Breeds with **flat-faces** or **double coats** have increased heatstroke risk. Is your dog high risk? Check the graph below.*

*Measured by how many times more likely to suffer heatstroke compared to Labrador Retrievers.



FEATURES OF DOGS MORE vulnerable TO HEATSTROKE

- Flat faces
- Older dogs
- Double coats
- Dogs of larger bodyweights
- Overweight/obese dogs

Heatstroke FACTS

French Bulldogs and English Bulldogs accounted for **36%** of the heatstroke cases in the study

June, July and August are high risk months, but any period of sudden hot weather increases the risk

59.6% of cases occurred on days with a UK Met Office heat-health alert

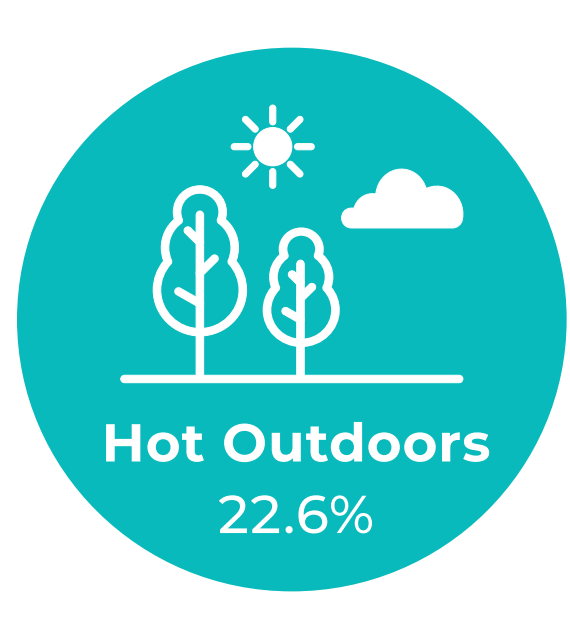
Triggers of HEATSTROKE



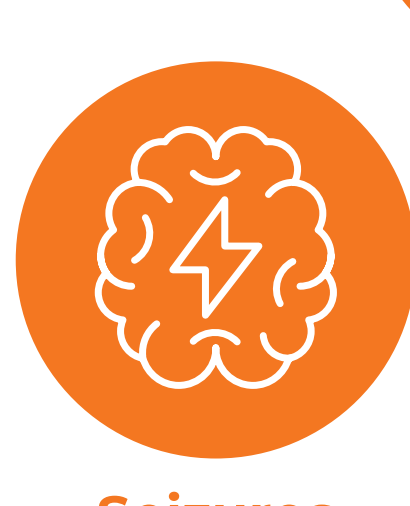
Stressful Environments
4.0%



Hot Indoors
8.3%



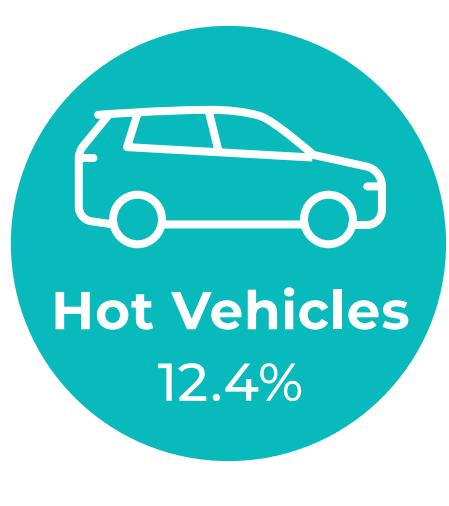
Hot Outdoors
22.6%



Seizures
11.3%



Exercise
51.5%



Hot Vehicles
12.4%

KNOW THE signs of Heatstroke

- Heavy panting or drooling
- Unsteady legs
- Racing heart
- Vomiting & diarrhoea
- Glassy eyes
- Excessive thirst

This study used VetCompass data to report the incidence risk (how often it happens), event fatality rate (how likely a dog is to die) and risk factors for HRI (what's most likely to cause it) in dogs presenting to Vets Now emergency care practices in the UK during 2022.